



State and Federal Legislative Changes Impacting Child Care

11/8/2017

Minnesota Department of Human Services | mn.gov/dhs

1

Welcome

- Introductions
- Purpose of today's training
- Agenda
 - Overview of the Child Care and Development Block Grant Act of 2014
 - Changes to Minnesota's Child Care Assistance Program
 - Changes to Licensed Child Care
 - Quality initiatives
 - Time for questions

11/8/2017

Minnesota Department of Human Services | mn.gov/dhs

2

What motivated program changes?



CCDB Law

Funding



Change

11/8/2017

Minnesota Department of Human Services | mn.gov/dhs

3

Dual purpose of CCDF

Work
support



Key features of reauthorization



Child Care and Development Block Grant Act

Changes to Minnesota's Child Care Assistance Program (CCAP)

11/8/2017

Minnesota Department of Human Services | mn.gov/dhs

7

mn DEPARTMENT OF
HUMAN SERVICES

Changes for families

Changes to CCAP to be more family friendly and increase stability for children

CCAP changes for families

- 12 month continuous eligibility
- Stable copayments
-



Extended Eligibility

If activity permanently ends

Allow up to 3 months of extended eligibility

If new activity doesn't meet requirements

Continue child care until next redetermination

At redetermination

End care if:

- No activity
- Activity doesn't meet participation requirements.

Change\$ for providers

CCAP changes for providers

More stable authorizations

Training requirements

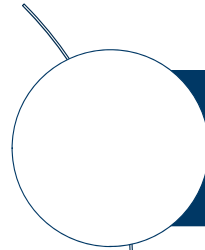
Faster payment

c h a n g i n g

2

4

Other 2017 CCAP Changes



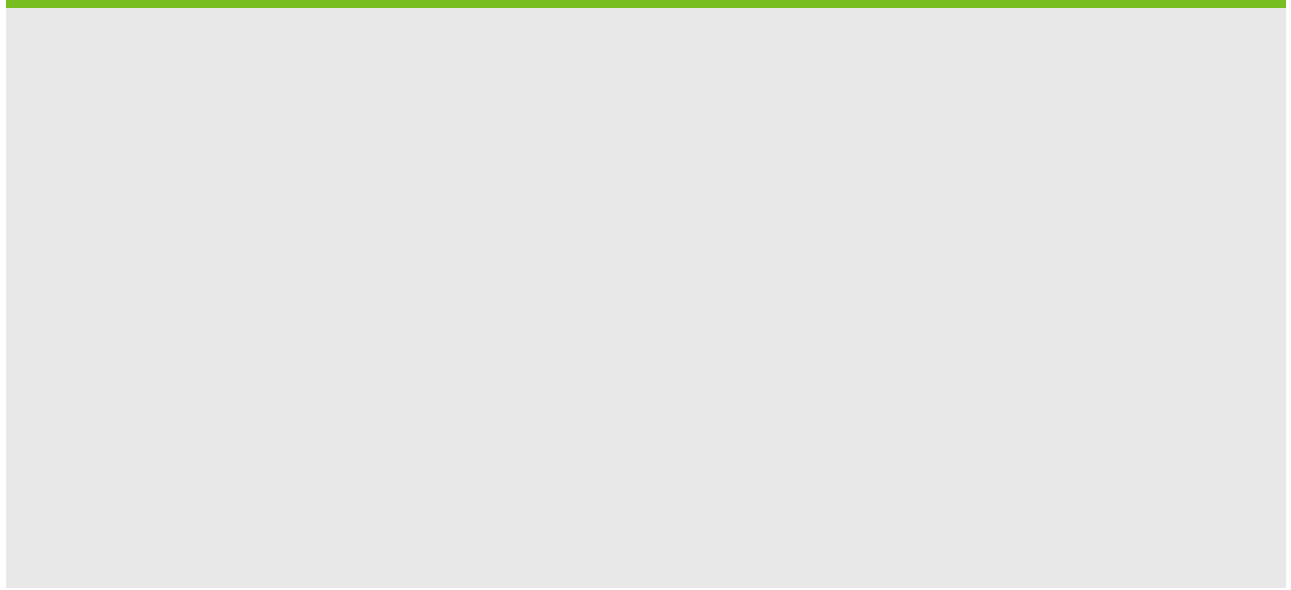
Payment limited for multiple providers



Payment for center employees limited to 25 children

2017 Legislative Session

Changes to licensed





Emergency preparedness plan

New requirement for licensed child care centers and licensed family providers:

Must use the Keeping Kids Safe emergency plan template to create an emergency preparedness plan

Relevant citations:

Licensed Family Programs Minn. Stat. 245A.41 subd. 3

Licensed Centers: Minn. Stat. 245A.51 subd. 3



Health and safety training requirements

- Preventing Abusive Head Trauma (AHT)
- Transporting children (if transportation is provided)
- First aid and CPR
- Preventing and reporting child abuse and neglect
- Child development
- Preventing and controlling infectious diseases
- Preventing SUID and use of infant safe sleep practices
- Administering medication
- Building and physical premises safety



Other Legislative Changes
for Licensed Centers and Family Providers



Certification of license exempt centers

- Certification vs. licensure
- Who must be certified?
- Certification includes:
 - 12 health and safety standards
 - Monitoring and inspections
 - Background studies
- Timeline

Relevant citation:
See Minn. Stat. 245H

Additional resources:
Visit goo.gl/dSYEji

Background Study Requirements

New Child Care Background Study Requirements

- State law requires child care providers who are licensed/regulated or who receive CCAP to have a comprehensive study.
 - Licensed child care centers and Licensed family child care programs
 - License exempt centers and Legal nonlicensed providers that are registered to receive funding through the Child Care Assistant Program (CCAP)
- Comprehensive fingerprint based study required every 5 years
- Each study will cost \$40 plus a fingerprinting fee.

All current and new child care providers will need to have a new background study.

Background Study Requirements

Fingerprint Based FBI Study Requirements

1. A fingerprint search of FBI criminal records (for individuals 18 years of age and older)
2. A search of the National Sex Offender Public Website
3. A fingerprint search of records held by the Minnesota Bureau of Criminal Apprehension (BCA)
4. A search of Minnesota's predatory offender registry
5. A search of Minnesota's maltreatment registry
6. An out of state search of the child abuse and neglect registry for every state where that the individual resided of

Background Study Requirements

Individuals Requiring a New Comprehensive Background Study

- License/certification/registration holders, controlling individuals, and anyone who has direct contact with children, or unsupervised access to these individuals or their information.
- Anyone employed by a child care provider.
- Anyone whose activities involve the care or supervision of a child

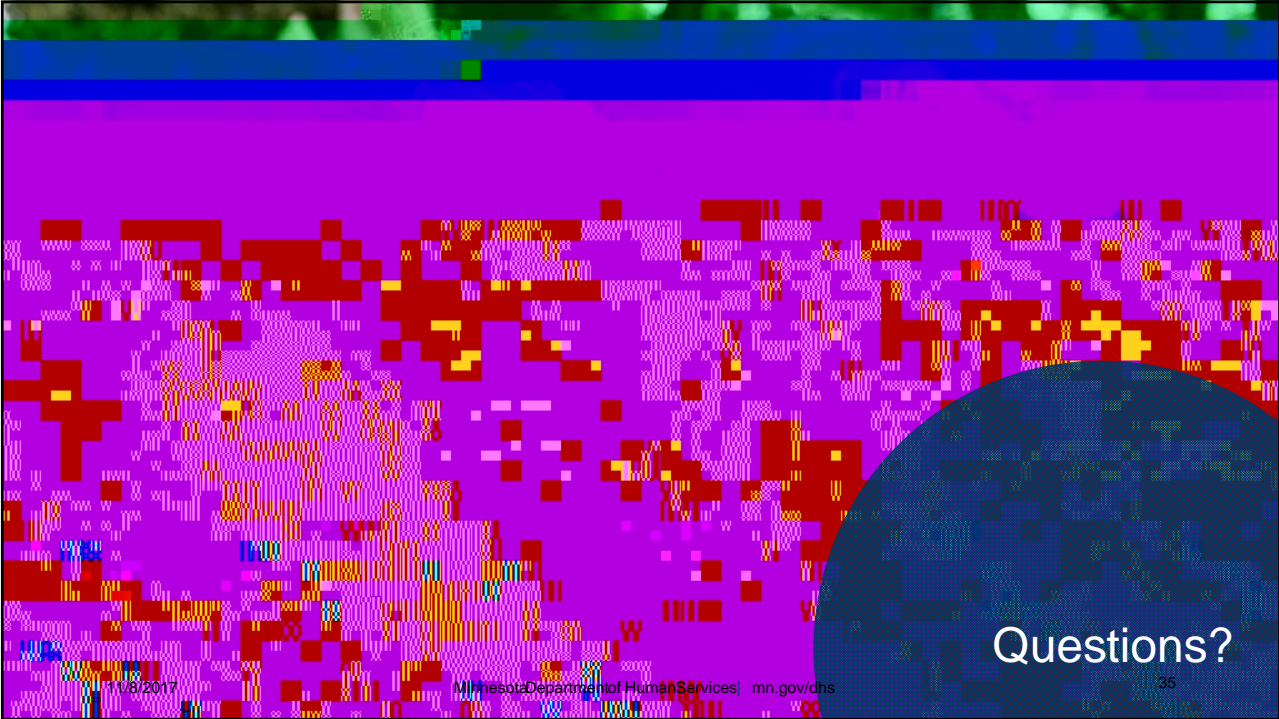
Background Study Requirements

Implementation Plan

- Implementation of the new comprehensive studies has not yet begun anywhere in the state
- Statewide meetings with providers and counties
- Providers will be contacted well in advance with instructions for when the new studies will be required and how to initiate them
- Feedback will be sought on a draft implementation plan
- Visit DHS Website for Frequently Asked Questions <https://tinyurl.com/MNchildcareFAQ>
- Send your questions and implementation recommendations to: DHS.CCDFReform@state.mn.us

Parent Aware

- Changes related to Early Learning Scholarships
- Changes to Parent Aware Standards and Indicators
- Changes in the ways Parent Aware supports quality improvement



Questions?